

Sample Received: 6/22/2021 Report Date: 6/24/2021 Report: 22011

**BULK FLOWER : LONDON POUND CAKE**

Potency Analysis Report

METRC No. 1A4000B0001A1FE000056416

Sample: **116275-P PLANTS**

Batch: A1H162-LPC

Item Notes:

**CANNABINOID LEVELS**

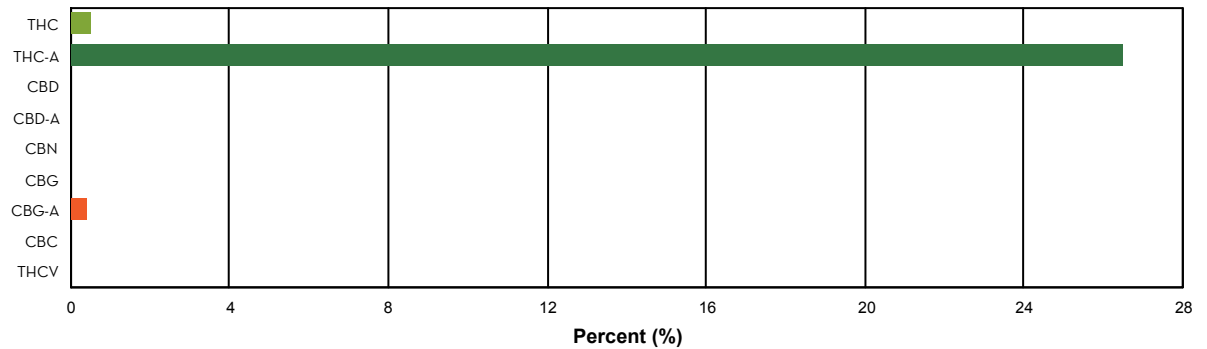
	%	mg/gram
THC	0.49	4.91
THC-A	26.52	265.18
CBD	N/D	N/D
CBD-A	< LLOQ	< LLOQ
CBN	N/D	N/D
CBG	< LLOQ	< LLOQ
CBG-A	0.42	4.18
CBC	N/D	N/D
THCV	N/D	N/D
<b>Total</b>	<b>27.43</b>	<b>274.27</b>

**TOTAL THC\*: 23.75 %**

THC + THC-A\*: % by weight

**TOTAL CBD\*: < LLOQ**

CBD + CBD-A\*: % by weight



**ADDITIONAL INFORMATION**

\*\*THC Conversion 1.82%

\*\*CBD Conversion 0.00%

\***Total THC** is calculated using the equation  $THC + (THC-A \cdot 0.877)$ . This accounts for the weight lost by THC-A when it is decarboxylated to become active THC. An equivalent formula is used to determine Total CBD.

\*\***THC/CBD Conversion** indicates the percentage of total cannabinoid that was already converted to active cannabinoid at the time of testing. 100% indicates that all cannabinoid present was in the active, decarboxylated form at the time of testing.

**N/D** = Not Detected. The level of analyte was below the detection threshold for this test.

**LLOQ** = Lower Limit of Quantitation. <LLOQ signifies that the analyte was detected at a concentration below the calibrated range of the method and could not be accurately measured.