

## BULK FLOWER : APPLES AND BANANAS

Potency Analysis Report

METRC No. 1A4000B0001A1FE000054053

Sample: **113558-P** PLANTS

Batch: A18H157-ANB

Item Notes:

### CANNABINOID LEVELS

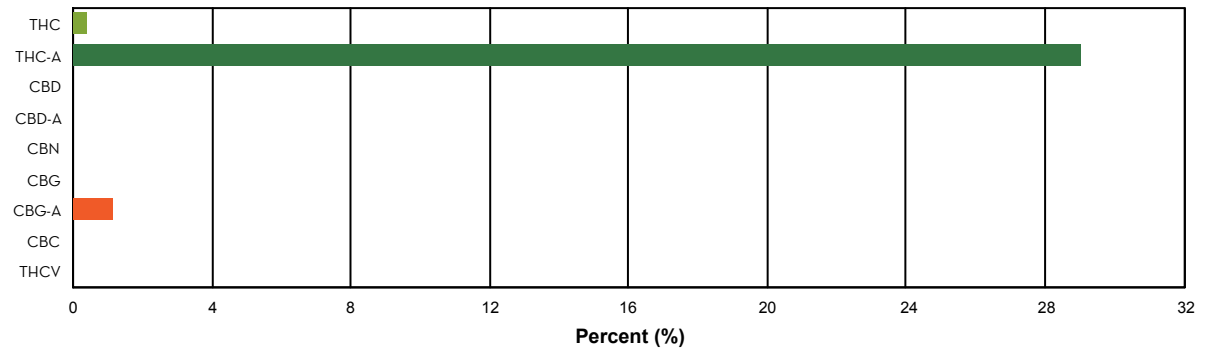
	%	mg/gram
THC	0.39	3.94
THC-A	29.02	290.16
CBD	N/D	N/D
CBD-A	< LLOQ	< LLOQ
CBN	N/D	N/D
CBG	< LLOQ	< LLOQ
CBG-A	1.16	11.58
CBC	N/D	N/D
THCV	N/D	N/D
<b>Total</b>	<b>30.57</b>	<b>305.67</b>

### TOTAL THC\*: 25.85 %

THC + THC-A\*: % by weight

### TOTAL CBD\*: < LLOQ

CBD + CBD-A\*: % by weight



### ADDITIONAL INFORMATION

\*\*THC Conversion 1.34%

\*\*CBD Conversion 0.00%

\***Total THC** is calculated using the equation  $THC + (THC-A \cdot 0.877)$ . This accounts for the weight lost by THC-A when it is decarboxylated to become active THC. An equivalent formula is used to determine Total CBD.

\*\***THC/CBD Conversion** indicates the percentage of total cannabinoid that was already converted to active cannabinoid at the time of testing. 100% indicates that all cannabinoid present was in the active, decarboxylated form at the time of testing.

**N/D** = Not Detected. The level of analyte was below the detection threshold for this test.

**LLOQ** = Lower Limit of Quantitation. <LLOQ signifies that the analyte was detected at a concentration below the calibrated range of the method and could not be accurately measured.