

## BULK FLOWER : UNICORN POOP

Potency Analysis Report

Sample: **89340-P** PLANTS

Item Notes:

METRC No. **1A4000B0001A1FE000031780**

Batch: A10H109-UNI

### CANNABINOID LEVELS

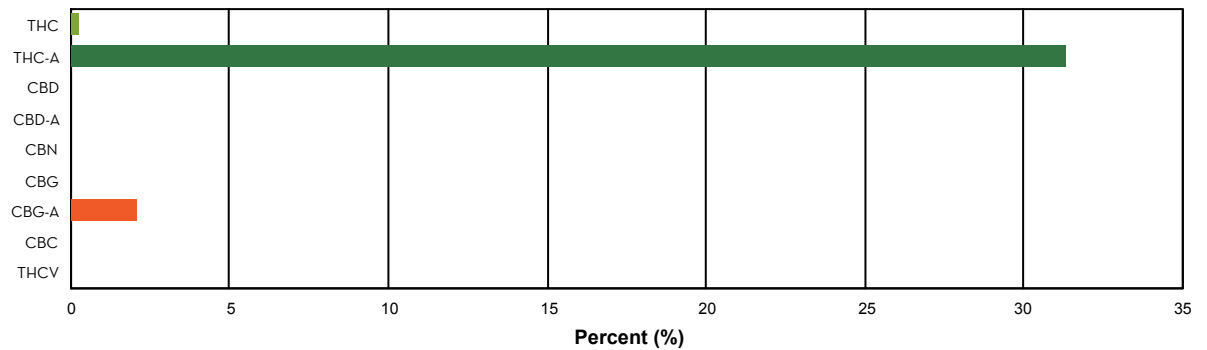
	%	mg/gram
THC	0.27	2.73
THC-A	31.34	313.42
CBD	N/D	N/D
CBD-A	< LLOQ	< LLOQ
CBN	N/D	N/D
CBG	< LLOQ	< LLOQ
CBG-A	2.10	21.03
CBC	N/D	N/D
THCV	N/D	N/D
<b>Total</b>	<b>33.72</b>	<b>337.17</b>

### TOTAL THC\*: 27.77 %

THC + THC-A\*: % by weight

### TOTAL CBD\*: < LLOQ

CBD + CBD-A\*: % by weight



### ADDITIONAL INFORMATION

\*\*THC Conversion 0.86%

\*\*CBD Conversion 0.00%

\***Total THC** is calculated using the equation  $THC + (THC-A \cdot 0.877)$ . This accounts for the weight lost by THC-A when it is decarboxylated to become active THC. An equivalent formula is used to determine Total CBD.

\*\***THC/CBD Conversion** indicates the percentage of total cannabinoid that was already converted to active cannabinoid at the time of testing. 100% indicates that all cannabinoid present was in the active, decarboxylated form at the time of testing.

**N/D** = Not Detected. The level of analyte was below the detection threshold for this test.

**LLOQ** = Lower Limit of Quantitation. <LLOQ signifies that the analyte was detected at a concentration below the calibrated range of the method and could not be accurately measured.

Authorized by: Roy Turton, Lab Director

Page 6 of 11

ISO/IEC 17025:2017

