

## BULK FLOWER : OLD FAMILY PURPLE

Potency Analysis Report

METRC No. 1A4000B0000AB1E000003099

Sample: 94602-P PLANTS

Batch: 15H370-0FP

Item Notes:

### CANNABINOID LEVELS

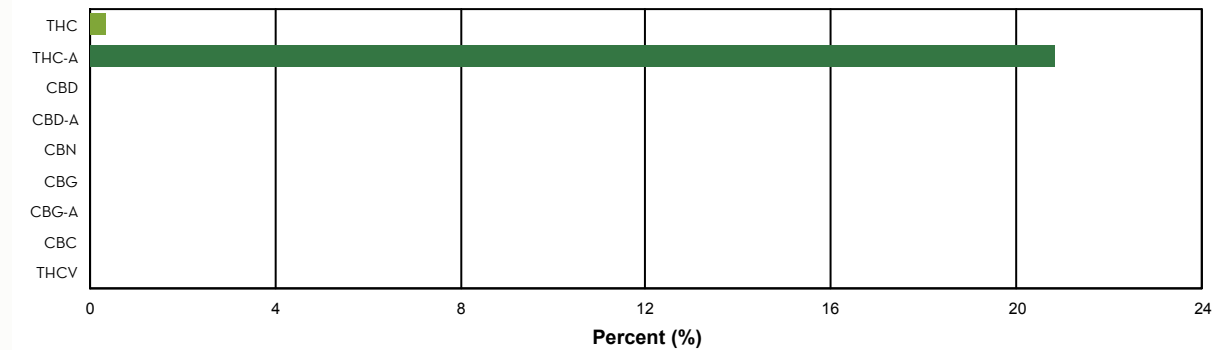
	%	mg/gram
THC	0.33	3.32
THC-A	20.84	208.43
CBD	N/D	N/D
CBD-A	N/D	N/D
CBN	N/D	N/D
CBG	N/D	N/D
CBG-A	< LLOQ	< LLOQ
CBC	N/D	N/D
THCV	N/D	N/D
<b>Total</b>	<b>21.18</b>	<b>211.75</b>

### TOTAL THC\*: 18.62 %

THC + THC-A\*: % by weight

### TOTAL CBD\*: N/D

CBD + CBD-A\*: % by weight



### ADDITIONAL INFORMATION

\*\*THC Conversion 1.57%

**\*Total THC** is calculated using the equation  $THC + (THC-A \cdot 0.877)$ . This accounts for the weight lost by THC-A when it is decarboxylated to become active THC. An equivalent formula is used to determine Total CBD.

**\*\*THC/CBD Conversion** indicates the percentage of total cannabinoid that was already converted to active cannabinoid at the time of testing. 100% indicates that all cannabinoid present was in the active, decarboxylated form at the time of testing.

**N/D** = Not Detected. The level of analyte was below the detection threshold for this test.

**LLOQ** = Lower Limit of Quantitation. <LLOQ signifies that the analyte was detected at a concentration below the calibrated range of the method and could not be accurately measured.

Authorized by: Roy Turton, Lab Director

Page 1 of 5

ISO/IEC 17025:2017

