

BULK FLOWER : BOBBY BOUCHER

Potency Analysis Report

Sample: **76965-P** PLANTS

Item Notes:

METRC No. **1A4000B0000AB1E000001900**

Batch: 2H344-BOB

CANNABINOID LEVELS

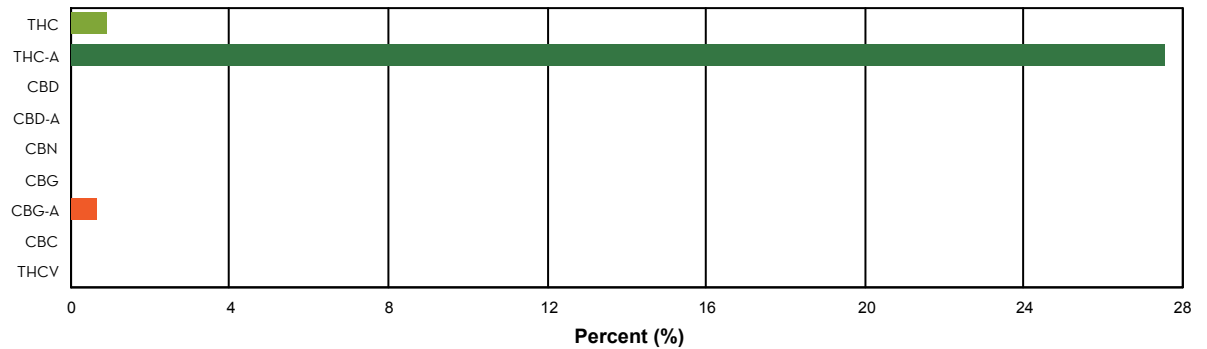
	%	mg/gram
THC	0.90	8.99
THC-A	27.56	275.57
CBD	N/D	N/D
CBD-A	< LLOQ	< LLOQ
CBN	N/D	N/D
CBG	< LLOQ	< LLOQ
CBG-A	0.65	6.48
CBC	N/D	N/D
THCV	N/D	N/D
Total	29.10	291.03

TOTAL THC*: 25.07 %

THC + THC-A*: % by weight

TOTAL CBD*: < LLOQ

CBD + CBD-A*: % by weight



ADDITIONAL INFORMATION

**THC Conversion 3.16%
 **CBD Conversion 0.00%

***Total THC** is calculated using the equation $THC + (THC-A \cdot 0.877)$. This accounts for the weight lost by THC-A when it is decarboxylated to become active THC. An equivalent formula is used to determine Total CBD.

****THC/CBD Conversion** indicates the percentage of total cannabinoid that was already converted to active cannabinoid at the time of testing. 100% indicates that all cannabinoid present was in the active, decarboxylated form at the time of testing.

N/D = Not Detected. The level of analyte was below the detection threshold for this test.

LLOQ = Lower Limit of Quantitation. <LLOQ signifies that the analyte was detected at a concentration below the calibrated range of the method and could not be accurately measured.

Authorized by: Roy Turton, Lab Director

Page 2 of 5

ISO/IEC 17025:2017

