

BULK FLOWER : SLURRICANE

Potency Analysis Report

Sample: **65522-P** PLANTS

Item Notes:

METRC No. **1A4000B0001A1FE000013355**

Batch: A4H66-SLU

CANNABINOID LEVELS

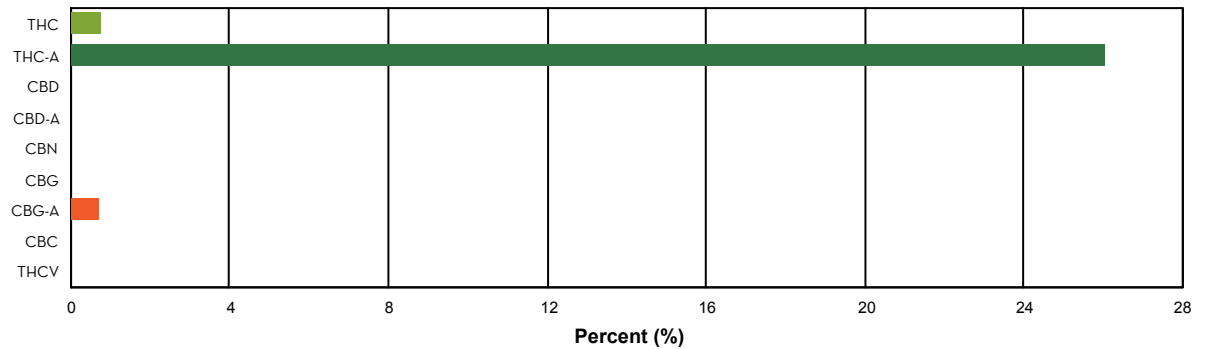
	%	mg/gram
THC	0.78	7.82
THC-A	26.07	260.70
CBD	N/D	N/D
CBD-A	N/D	N/D
CBN	< LLOQ	< LLOQ
CBG	< LLOQ	< LLOQ
CBG-A	0.71	7.09
CBC	N/D	N/D
THCV	N/D	N/D
Total	27.56	275.61

TOTAL THC*: 23.65 %

THC + THC-A*: % by weight

TOTAL CBD*: N/D

CBD + CBD-A*: % by weight



ADDITIONAL INFORMATION

**THC Conversion 2.91%

****Total THC** is calculated using the equation $THC + (THC-A \cdot 0.877)$. This accounts for the weight lost by THC-A when it is decarboxylated to become active THC. An equivalent formula is used to determine Total CBD.

****THC/CBD Conversion** indicates the percentage of total cannabinoid that was already converted to active cannabinoid at the time of testing. 100% indicates that all cannabinoid present was in the active, decarboxylated form at the time of testing.

N/D = Not Detected. The level of analyte was below the detection threshold for this test.

LLOQ = Lower Limit of Quantitation. <LLOQ signifies that the analyte was detected at a concentration below the calibrated range of the method and could not be accurately measured.