

BULK FLOWER : MIMOSA

Potency Analysis Report

Sample: **106796-P** PLANTS

Item Notes:

METRC No. 1A4000B0000AB1E000003981

Batch: 16H386-MIM

CANNABINOID LEVELS

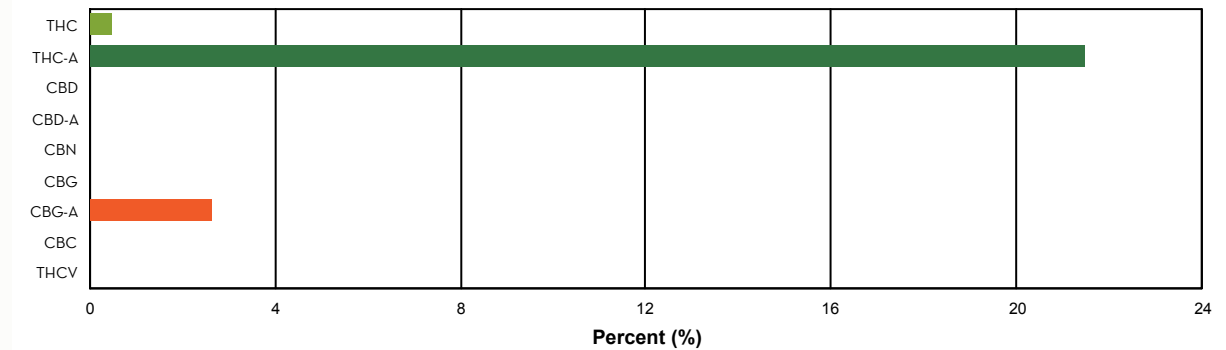
	%	mg/gram
THC	0.48	4.80
THC-A	21.49	214.91
CBD	N/D	N/D
CBD-A	< LLOQ	< LLOQ
CBN	N/D	N/D
CBG	< LLOQ	< LLOQ
CBG-A	2.65	26.51
CBC	N/D	N/D
THCV	N/D	N/D
Total	24.62	246.23

TOTAL THC*: 19.33 %

THC + THC-A*: % by weight

TOTAL CBD*: < LLOQ

CBD + CBD-A*: % by weight



ADDITIONAL INFORMATION

**THC Conversion 2.18%

**CBD Conversion 0.00%

***Total THC** is calculated using the equation $THC + (THC-A \cdot 0.877)$. This accounts for the weight lost by THC-A when it is decarboxylated to become active THC. An equivalent formula is used to determine Total CBD.

****THC/CBD Conversion** indicates the percentage of total cannabinoid that was already converted to active cannabinoid at the time of testing. 100% indicates that all cannabinoid present was in the active, decarboxylated form at the time of testing.

N/D = Not Detected. The level of analyte was below the detection threshold for this test.

LLOQ = Lower Limit of Quantitation. <LLOQ signifies that the analyte was detected at a concentration below the calibrated range of the method and could not be accurately measured.