

BULK FLOWER : BIRTHDAY CAKE

Potency Analysis Report

Sample: **64340-P** PLANTS

Item Notes:

METRC No. **1A4000B0000AB1E000000949**

Batch: 12H324-BDC

CANNABINOID LEVELS

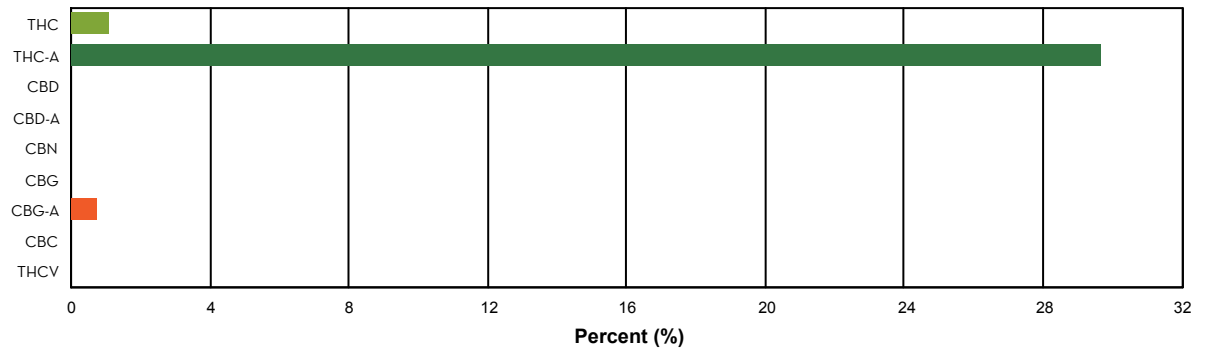
| | % | mg/gram |
|--------------|--------------|---------------|
| THC | 1.12 | 11.15 |
| THC-A | 29.68 | 296.83 |
| CBD | N/D | N/D |
| CBD-A | < LLOQ | < LLOQ |
| CBN | N/D | N/D |
| CBG | < LLOQ | < LLOQ |
| CBG-A | 0.77 | 7.73 |
| CBC | N/D | N/D |
| THCV | N/D | N/D |
| Total | 31.57 | 315.72 |

TOTAL THC*: 27.15 %

THC + THC-A*: % by weight

TOTAL CBD*: < LLOQ

CBD + CBD-A*: % by weight



ADDITIONAL INFORMATION

**THC Conversion 3.62%

**CBD Conversion 0.00%

***Total THC** is calculated using the equation $THC + (THC-A \cdot 0.877)$. This accounts for the weight lost by THC-A when it is decarboxylated to become active THC. An equivalent formula is used to determine Total CBD.

****THC/CBD Conversion** indicates the percentage of total cannabinoid that was already converted to active cannabinoid at the time of testing. 100% indicates that all cannabinoid present was in the active, decarboxylated form at the time of testing.

N/D = Not Detected. The level of analyte was below the detection threshold for this test.

LLOQ = Lower Limit of Quantitation. <LLOQ signifies that the analyte was detected at a concentration below the calibrated range of the method and could not be accurately measured.

Authorized by: Roy Turton, Lab Director

Page 1 of 6

ISO/IEC 17025:2017

